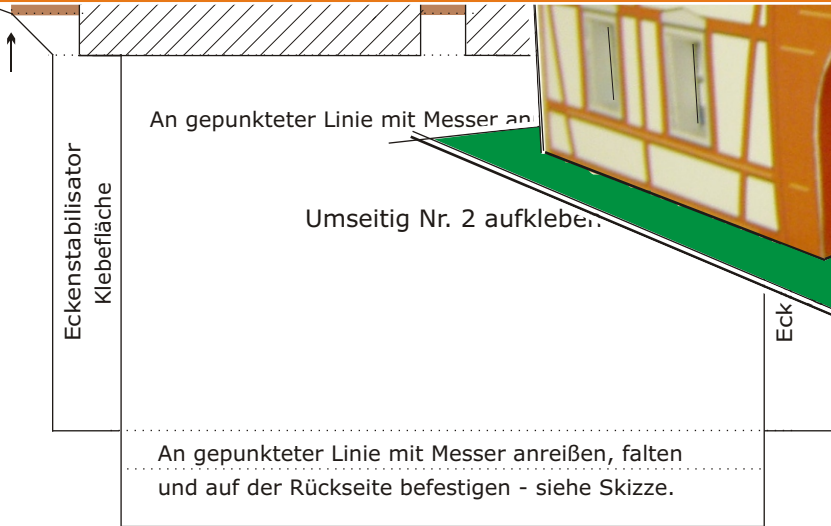
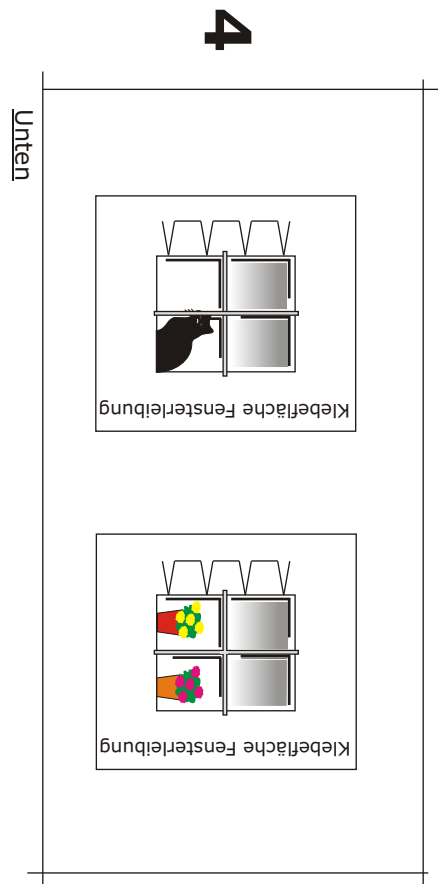
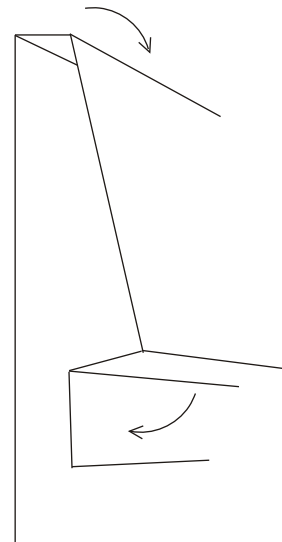
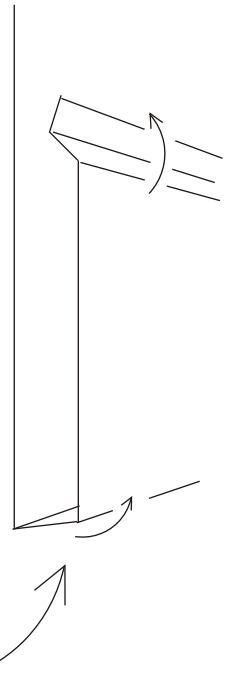
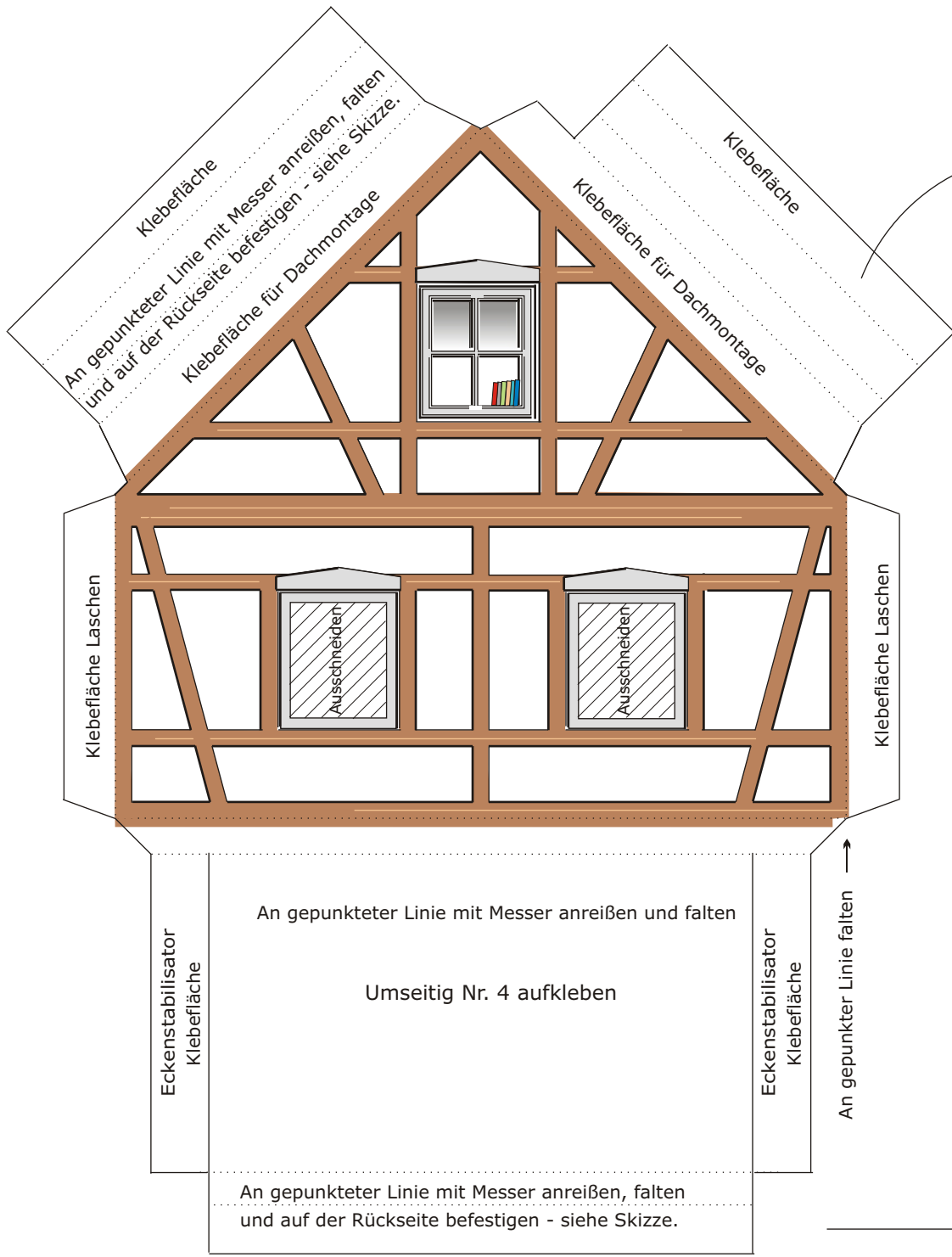
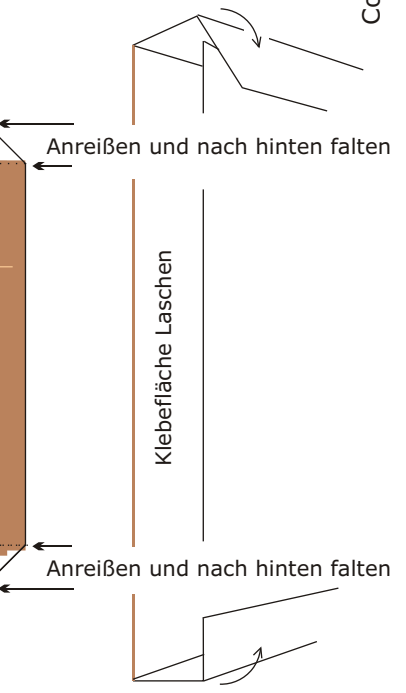
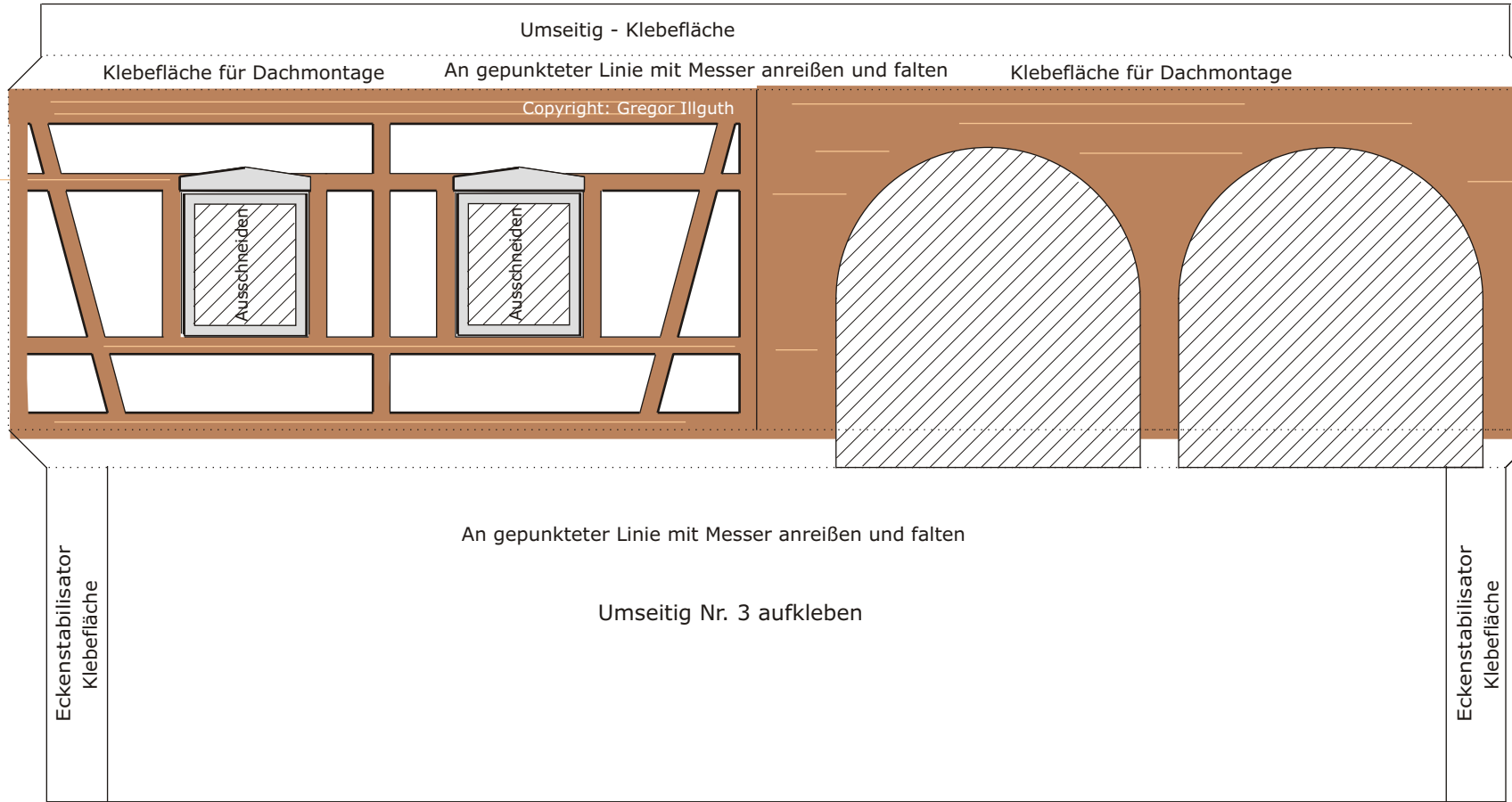
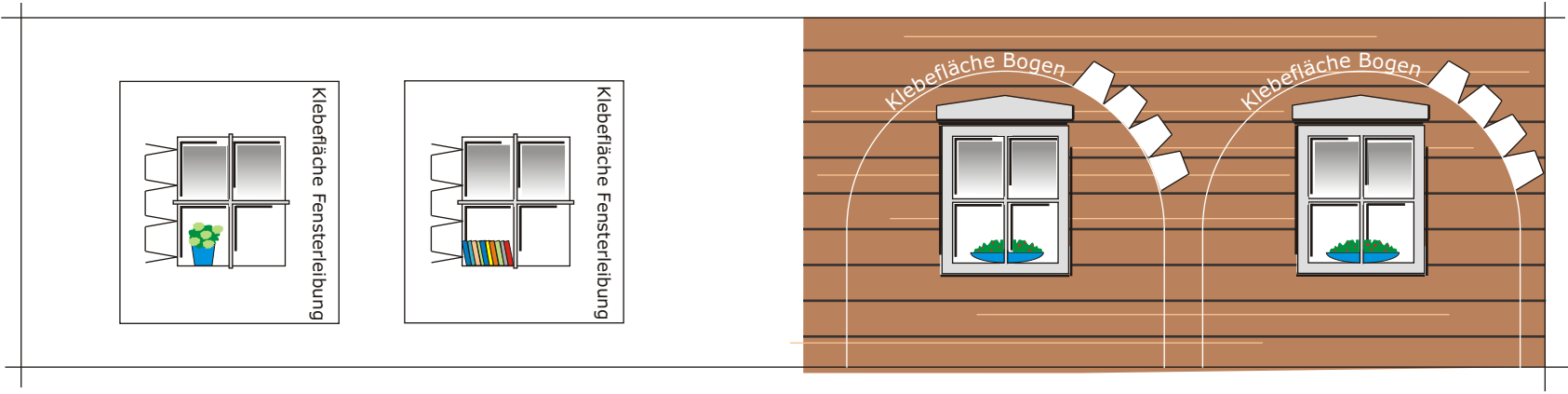


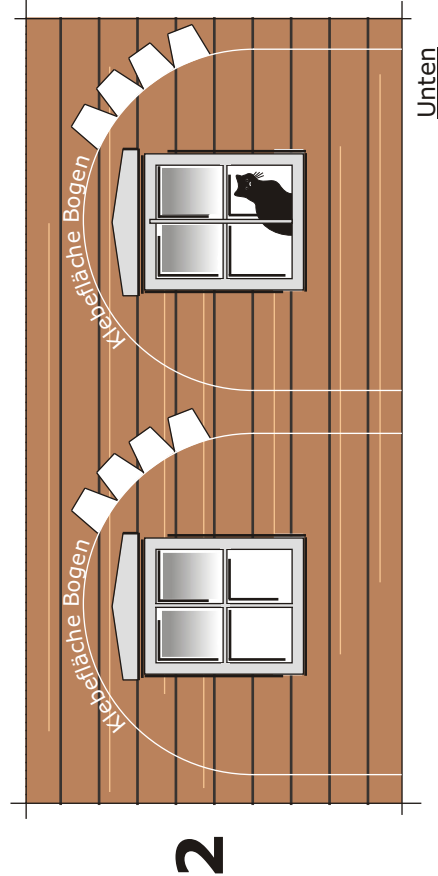
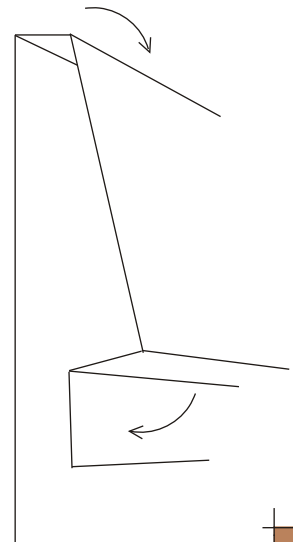
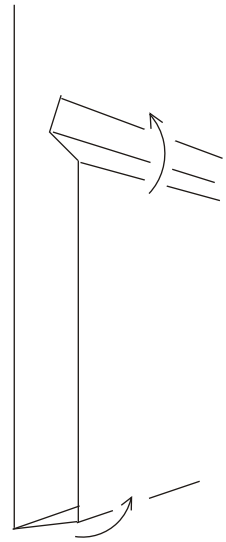
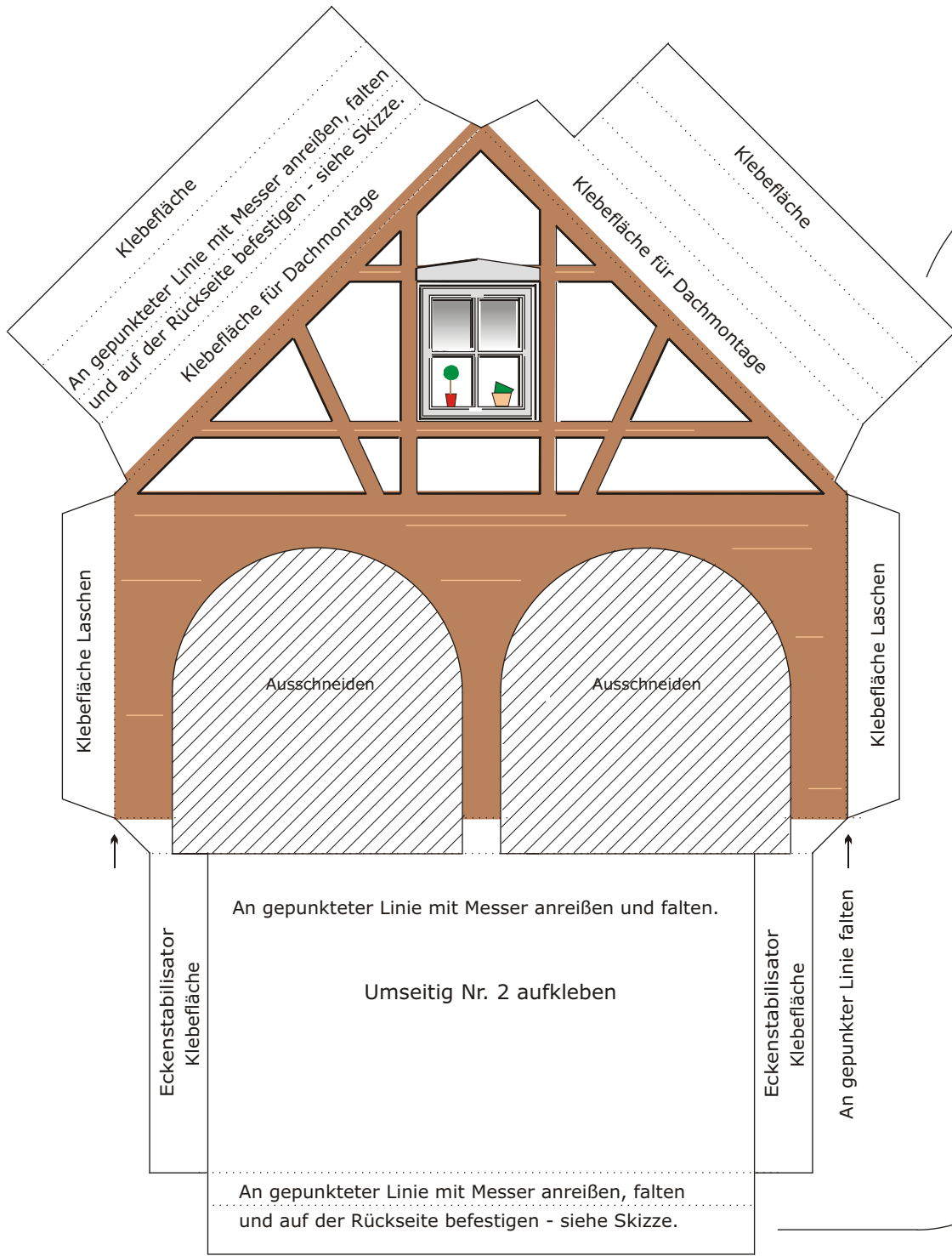
# Das Umgebindehaus

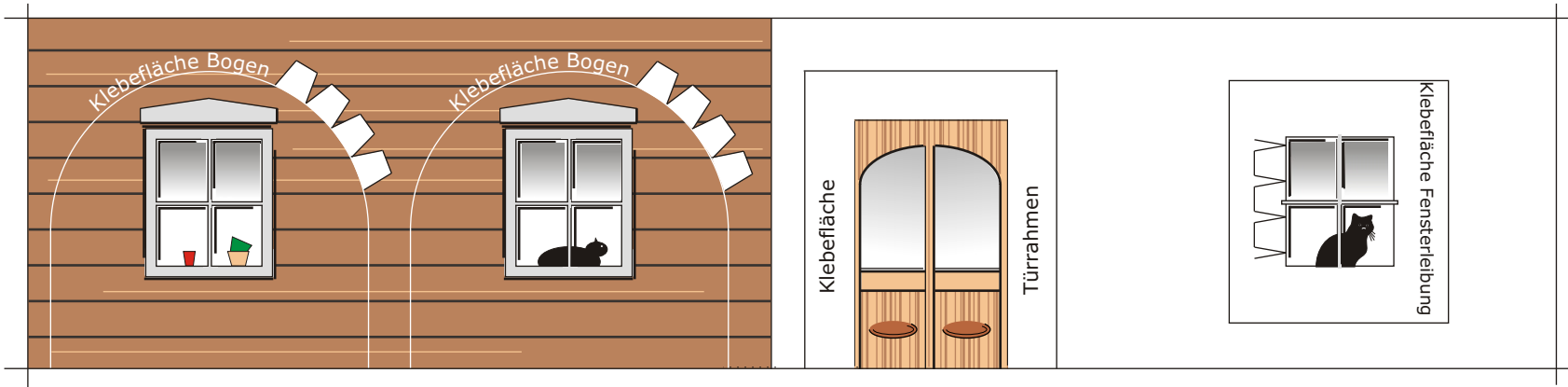
Der kleine Bastelspaß aus der Oberlausitz



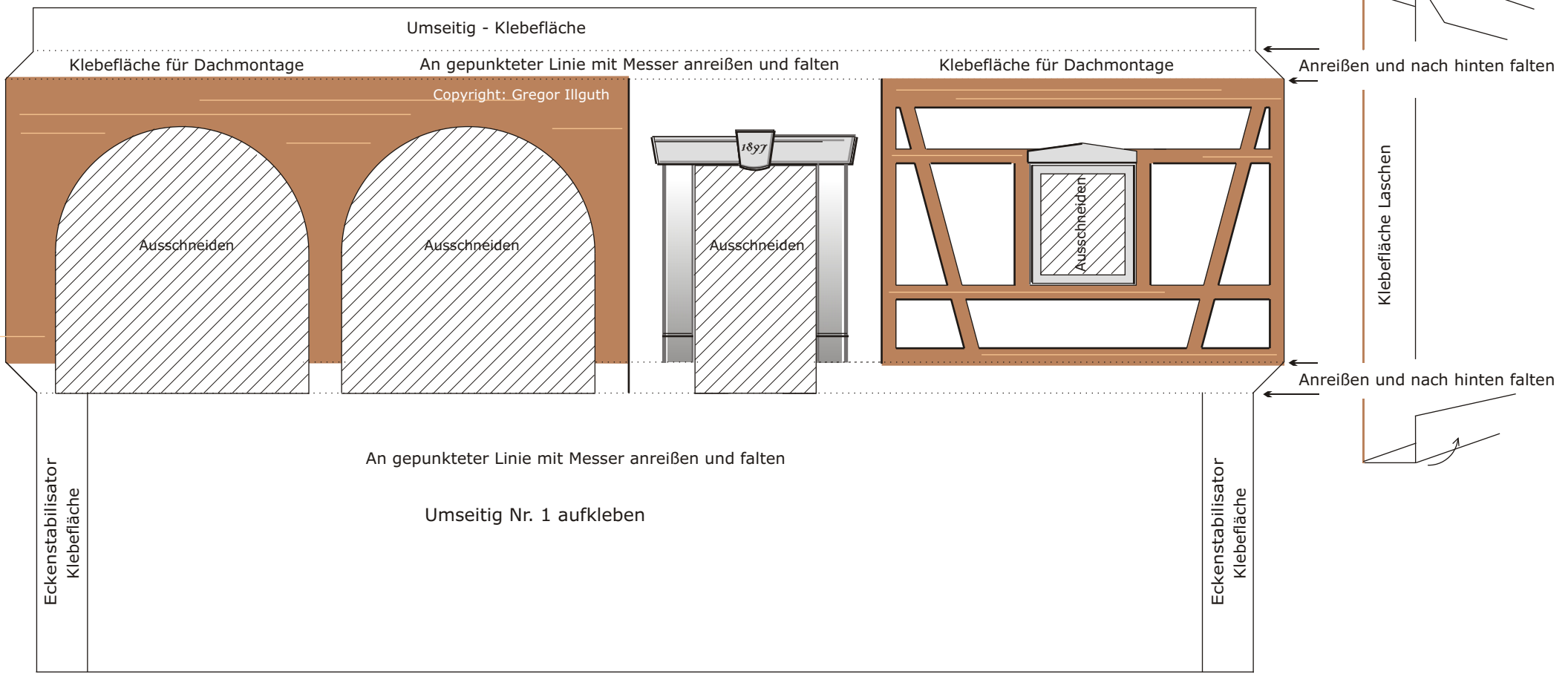








Copyright: Gregor Illguth - 2009  
RA Silbernagel & Hummel



Klebefläche für andere Dachhälfte

Montage 2

Montage 2

Copyright: Gregor Illguth

Klebefläche

Montage 1

An gepunkteten Linien mit Messer anreißen und falten

Anreißen und nach hinten falten

Klebefläche

Montage 2

Montage 1

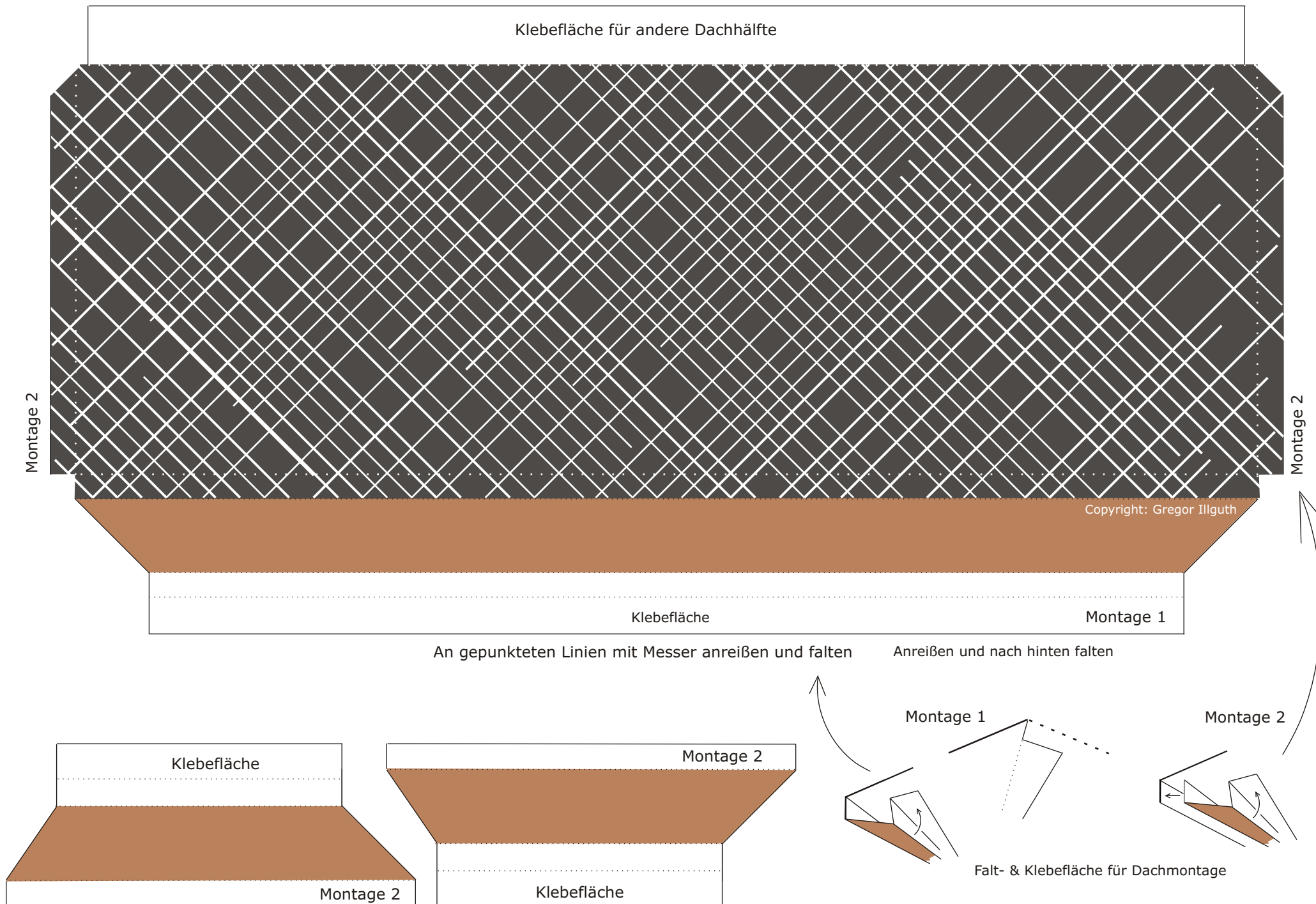
Montage 2

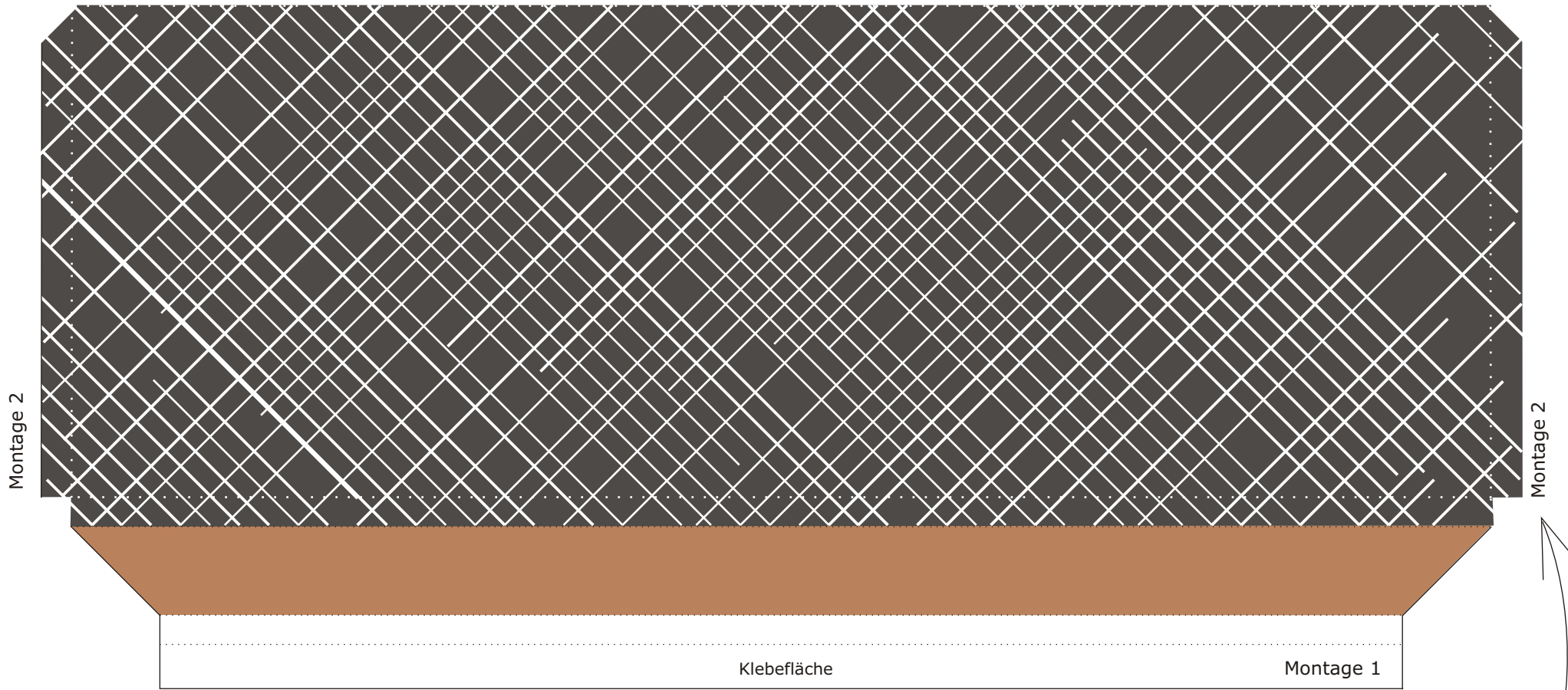
Montage 2

Klebefläche

Falt- & Klebefläche für Dachmontage

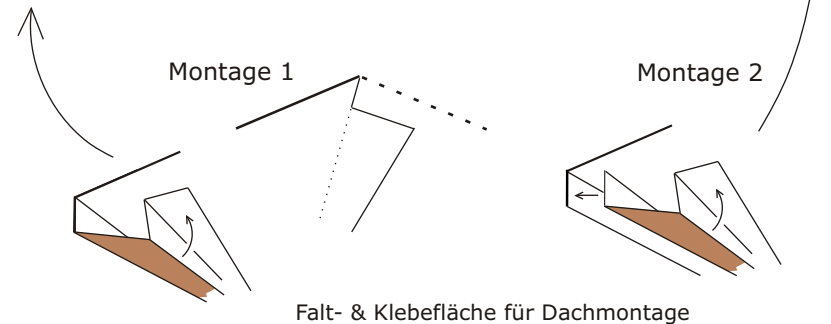
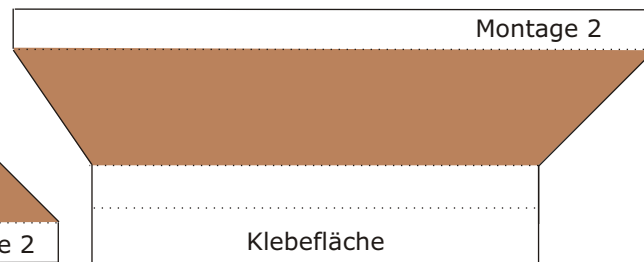
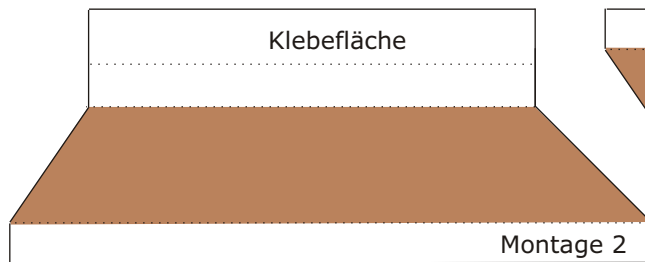
Copyright: Gregor Illguth - 2009  
RA Silbernagel & Hummel

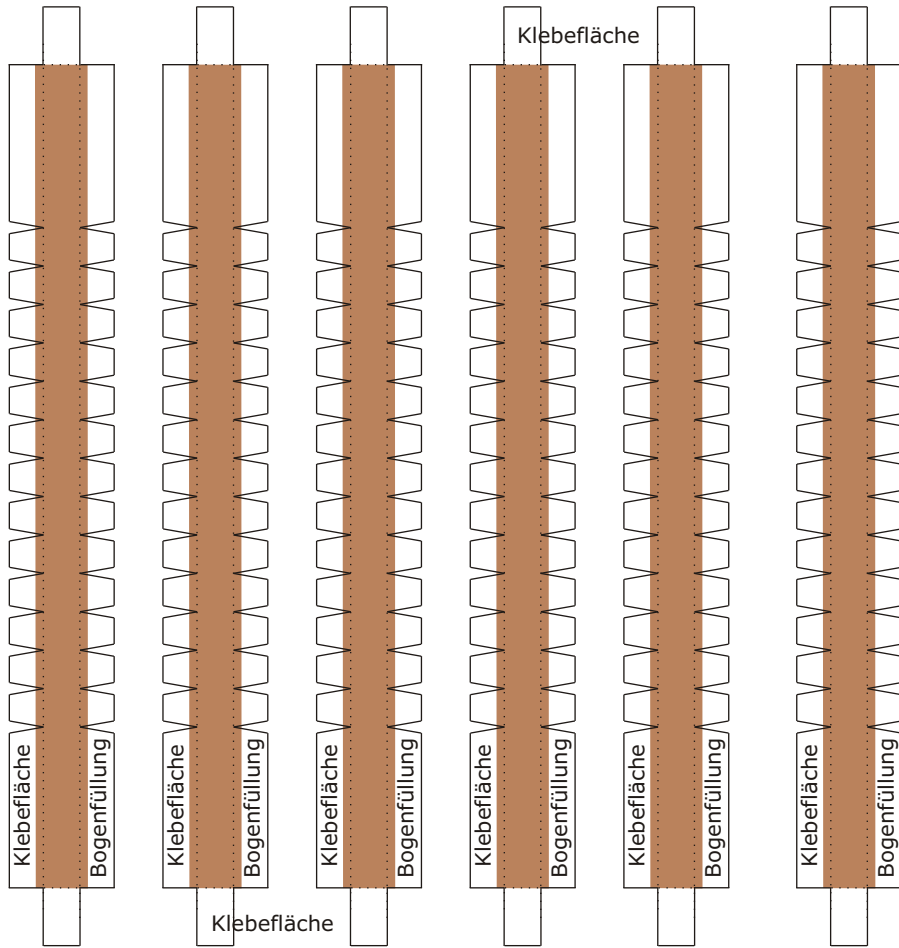




An gepunkteten Linien mit Messer anreißen und falten

Anreißen und nach hinten falten



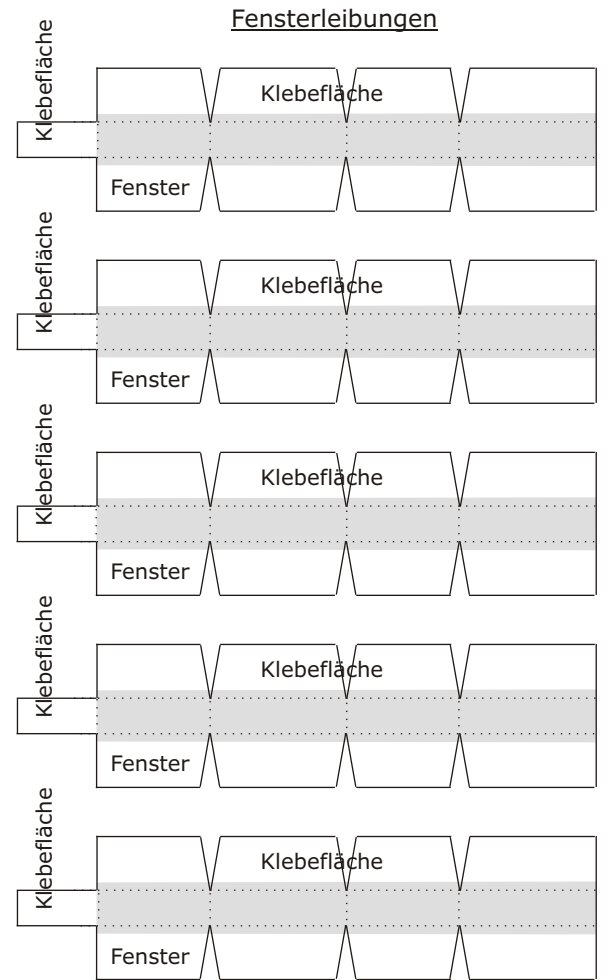


**Eckenstabilisator**  
 Ausschneiden, an gepunkteter Linie falten & je 1 innen in eine der 4 Ecken innen kleben.

**Eckenstabilisator**  
 Ausschneiden, an gepunkteter Linie falten & je 1 innen in eine der 4 Ecken innen kleben.

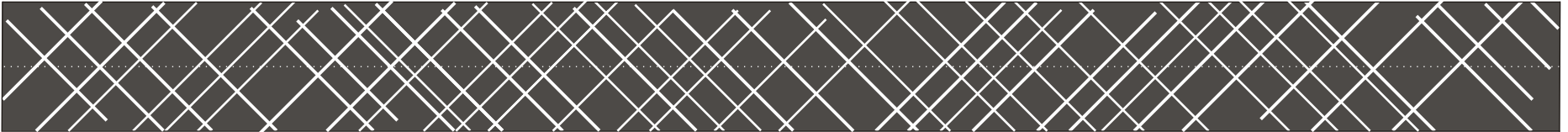
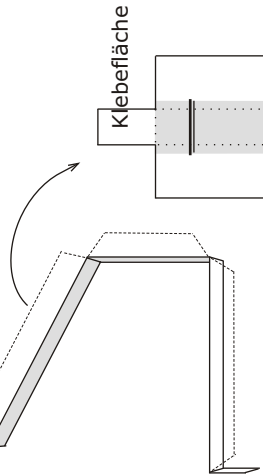
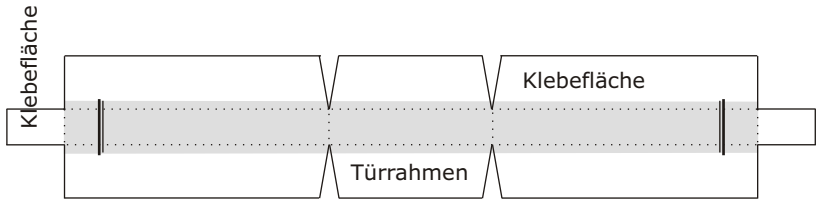
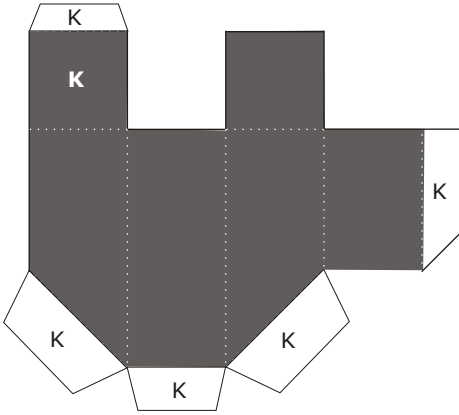
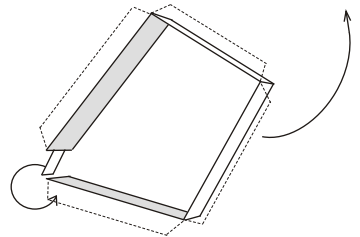
**Eckenstabilisator**  
 Ausschneiden, an gepunkteter Linie falten & je 1 innen in eine der 4 Ecken innen kleben.

**Eckenstabilisator**  
 Ausschneiden, an gepunkteter Linie falten & je 1 innen in eine der 4 Ecken innen kleben.



**Fensterleibungen**

K = Klebefläche  
 Schornstein



Dachfirst - ausschneiden, an gepunkteter Linie mit Messer anreißen, falten und beide Dachhälften verbinden